

## AMETHYST - Slice of Pie Cut

96 index gear • 15 mm x 10 mm • 9.8 carats

### PAVILION

P1	42.00°	48-96	Cut to a center point
P2	70.00°	24-72	Cut to girdle line
P3(G)	90.00°	96-48 24-72	

### PAVILION - CONCAVE

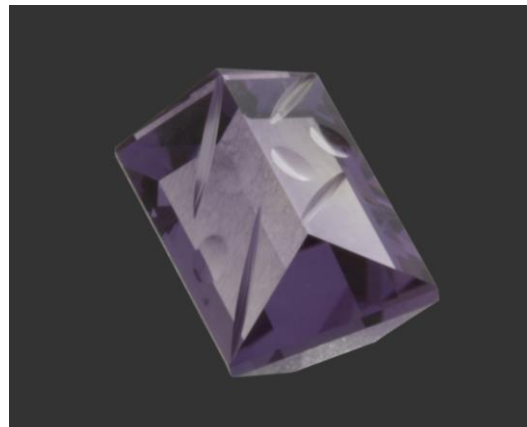
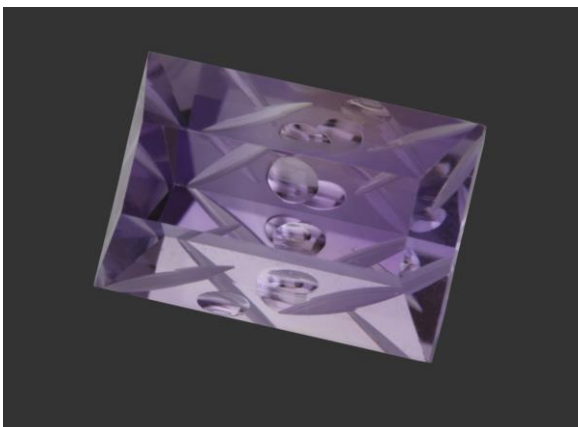
CC1 42.00° Index # 48 - 96

Set the motor plate at 45.00°. Using the slice tool, put one slice on the left side of the stone where it meets the pavilion. Repeat on opposite side of the stone. Move to the right side of the stone and put one slice starting at the girdle up towards the pavilion. Repeat on opposite side. Use 1,200 Diamond Paste for cutting slices and dimples. Do not polish slices.

CC2 42.00° Dimples: Motor plate should be at 0.0°. Using the 11 mm ball tool put two dimples in between the diagonal slices (the exact location of the dimples isn't important). You should get the same effect as long as the dots are between the slices. Polish with Cerium Oxide.

### CROWN

C1	42.50°	48-96	Finish should be half the width of the crown
C2	65.00°	24-72	
C3	40.00°	48-96	
TABLE	00.00°		



Authorized factory representative for Ultra Tec Faceting Machines, Equipment & Accessories