

**AMETRINE - Sophie's Charm Cut**

96 index gear • 16 mm • 11.3 carats

**PAVILION**

P1	43.00°	96-32-64	Cut to center point
P2(G)	90.00°	96-32-64	Cut to meet P1
P3	41.50°	6-26-38-58-70-90	Cut to center point
P4(G)	90.00°	6-26-38-58-70-90	Cut to meet P3
P5	33.91°	16-48-80	Cut to girdle - use 1,200 lap (just touch lap - cuts very fast)

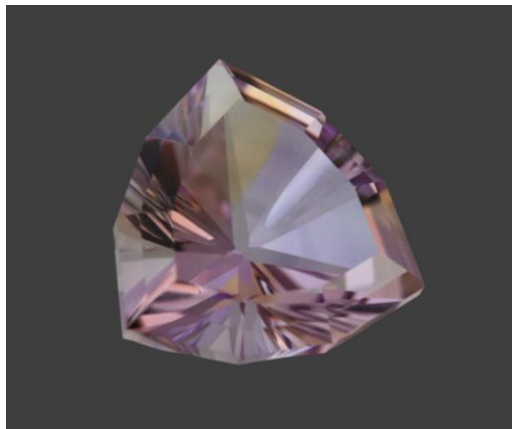
**PAVILION - CONCAVE**

CC1 45.00° 96-32-64

Using an 8 mm mandrel tool with 1,200 Diamond Paste, cut from girdle towards tip of the pavilion. Stop before reaching pavilion. Polish with Cerium Oxide.

**CROWN**

C1	42.77°	96-32-64-6-26-38-58-70-90
C2	35.00°	Same as C1
TABLE	00.00°	75% of the stone's width



Authorized factory representative for Ultra Tec Faceting Machines, Equipment & Accessories