



## COBALT BLUE CRISTINITE - Domino Effect Cut

96 index gear • 16 mm x 10 mm • 10.5 carats

### PAVILION

P1	45.00°	96-48	Cut to keel
P2(G)	90.00°	96-48	Cut to meet P1
P3	43.00°	96-48	Cut even step
P4	69.36°	12-36-60-84	Cut to meet P1, P3
P5(G)	90.00°	12-36-60-84	Cut to meet P4
P6(G)	90.00°	24-72	Cut to L/W=2.0
P7	69.36°	24-72	Cut to meet P6(G)

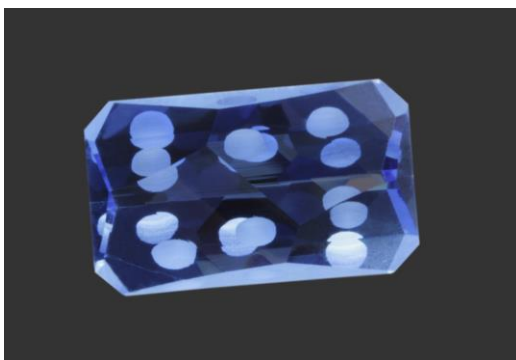
### PAVILION - CONCAVE

Using a 4mm ball tool facing the mast. Set mast at 43° and index on 96 (index settings should be the same as V5 machine.) Ball tool should be centered side-to-side and girdle to pavilion tip. Set dial indicator at 0°. Grind dimple approximately 3 mm wide. Repeat on 48. Move table 4 mm away and 1 mm forward and grind dimple repeat on 96. Reset machine to 0° and move table 4 mm towards you and 1 mm back. Repeat on 48.

### CROWN

C1	58.00°	96-48	Cut to meet girdle
C2	42.00°	24-72	Cut to meet girdle
C3	17.06°	12-36-60-84	Cut to meet girdle
C4	11.86°	12-60	Cut even step
C5	8.49°	12-60	Cut even step
C6	6.50°	12-60	Cut even step

Cut in refractive indexes 1.54 to 2.14 with no changes. This works well in about any material. Try it in a long skinny watermelon. Put the color in the center and leave some gold on the ends.



Authorized factory representative for Ultra Tec Faceting Machines, Equipment & Accessories