



HONEY / GREEN COLOR-CHANGE CRISTINITE - Legacy Cut

96 index gear • 10 mm x 12 mm • 5.7 carats

All polishing is done with Cerium Oxide.

PAVILION

P1	90.00°	96-48	72-24	Cut to a rectangle 10 x 12 mm
P2	42.00°	96-48		Cut to a center point
P3	65.00°	72-24		Cut to an even girdle
P4	90.00°	12-36	60-84	Grind off girdle corners to size
P5	41.00°	24-72		Grind each end approximately 1/3 of stone width
P6	90.00°			Grind pavilion tip flat approximately 3 mm wide

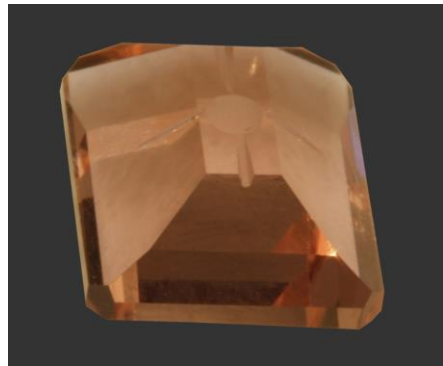
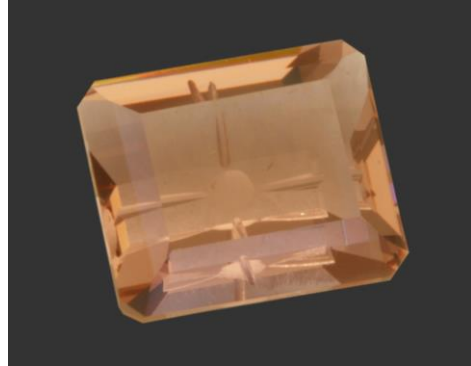
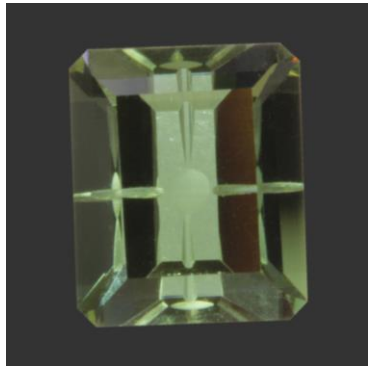
PAVILION - CONCAVE

Center stone on 5 mm ball tool. Grind/cut a dimple on the center of P-6; stop before reaching sides. Using slice tool, put a slice on all four sides; stop when tool touches dimple. Used 1,200 Diamond Paste on dimples and slices.

CROWN

C1	42.50°	96-48	24-72	Cut to a finished girdle
C2	40.00°	24-72	96-48	Finish should be 1/3 of crown facets
C3	42.50°	12-36	60-84	Cut corners to C2
C4	00.00°	TABLE		Cut table just over 1/2 width of stone

This is an easy fantasy/concave cut and perfect for first-time users of the Ultra Tec Fantasy Machine. Or, if you're simply looking for a gem cut that is clean looking but different.



Authorized factory representative for Ultra Tec Faceting Machines, Equipment & Accessories