



BI-COLOR CITRINE - Kit's Wonder Cut

96 index gear • 9 mm x 8 mm • 2.9 carats

PAVILION

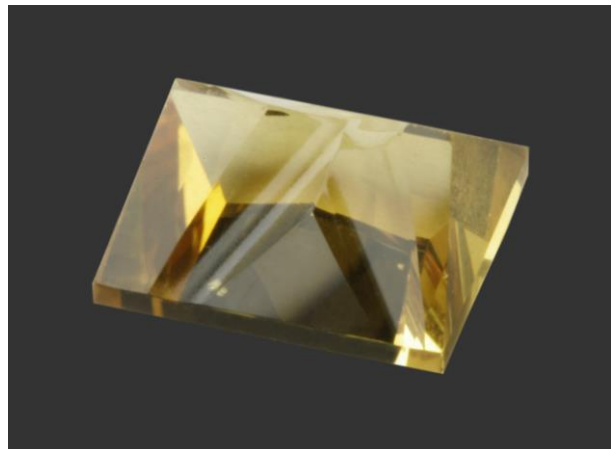
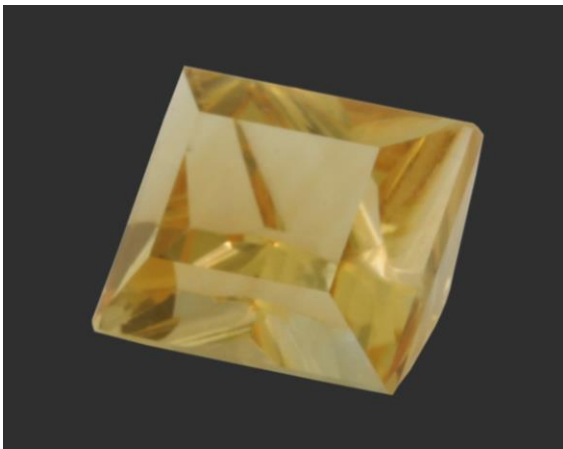
P1(G)	90.00°	96-48 24-72	
P2	75.00°	72-24	
P3	42.00°	96-48	Cut to a center point

PAVILION - CONCAVE

With 1,200 Diamond polish on an 8 mm mandrel, set motor plate at 30°00 (mandrel pointing away from you). Center stone on mandrel at 36.00° (mast). Concave stone on 96-48. Turn table to other 30.00° (mandrel pointing at you). Center stone and concave 96-48 at 36.00°. Polish with Cerium.

CROWN

C1	43.00°	96-48-24-72	Meet girdle
C2	41.50°	96-48-24-72	About 1/3 size of stone table 90.00°
TABLE	00.00°		



Authorized factory representative for Ultra Tec Faceting Machines, Equipment & Accessories