

## BI-COLOR CITRINE - V5 Star Cut

96 index gear • 11.62 mm • 7.3 carats

### PAVILION

P1	42.00°	8-24-40-56-72-88	Cut to a center point
P2(G)	90.00°	96-16-32-48-64-80	Cut until facets meet
P3(G)	90.00°	8-24-40-56-72-88	Cut approximately 1/3 width of facet (P1)
P4	50.00°	96-16-32-48-64-80	

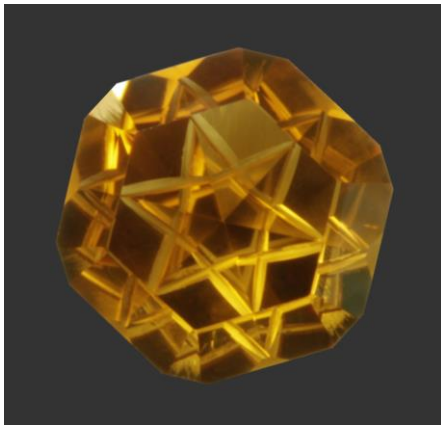
### CONCAVE - Slice Tool

CC1	32.00°	8-24-40-56-72-88	Use 1,200 paste
CC2	32.00°	8-24-40-56-72-88	Use 1,200 paste

Line up the slice with P4's edges. With the motor at 45.00°, put a slice parallel and to the tip of P4. Next, turn the motor to the opposite 45.00° and put an opposite slice that forms an "X". The tips should touch from one facet to another and form a star.

### CROWN

C1	43.00°	96-16-32-48-64-80	Cut to girdle line
C2	41.00°	96-16-32-48-64-80	Cut until P1 is 1/5 of diameter of crown
C3	43.00°	8-24-40-56-72-88	Cut to a level girdle
TABLE	00.00°		Cut just past tips of P3 and polish with Cerium



Authorized factory representative for Ultra Tec Faceting Machines, Equipment & Accessories