

NEON GREEN QUARTZ - Remy's Flower Cut

96 index gear • 16 mm x 13 mm • 13.4 carats

PAVILION

P1	40.57°	96-04-08-12-17-18-23-25-30-31-36-40-44 48-52-56-60-65-66-71-73-78-79-84-88-92	Cut to center point
G1	90.00°	96-48	Cut to correct width
G2	90.00°	24-72	Cut to correct width
P2	72.34°	96-48	Set girdle level
P3	56.54°	24-72	Set girdle level
G3	90.00°	12-36-60-84	Remove corners (approximately 2 mm wide)

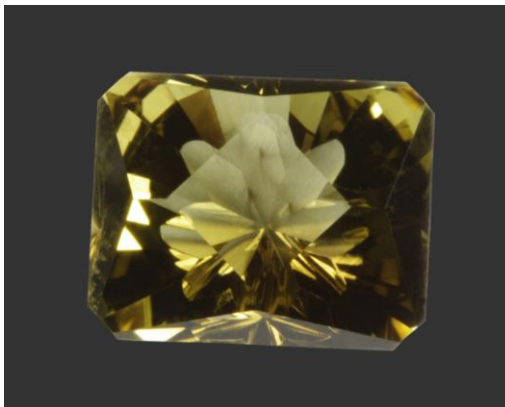
PAVILION - CONCAVE

CC1 35.00° 96-12-24-36-48-60-72-84

With the motor at 0.0° and using an 8 mm mandrel, set the mast at 96 and at 35.00°. Using 1,200 Diamond Paste, grind a concave; stopping 1-1/2 mm before reaching P2. Repeat on remaining index numbers. All concave cuts should be the same width and length. Polish with Cerium Oxide.

CROWN

C1	58.00°	96-48	Cut to a finish girdle
C2	42.00°	24-72	Cut to a finish girdle; C1 & C2 will not touch
C3	17.06°	12-36-60-84	Stop before reaching C1 & C2 or when the top of G3 is flat on top
TABLE	00.00°		Table will be diagonal on stone. Stop table width 1 mm before reaching P2



Authorized factory representative for Ultra Tec Faceting Machines, Equipment & Accessories