



SUNFIRE CITRINE (Bi-Color) - Autumn Blaze Cut

96 index gear • 16 mm • 15 carats

PAVILION

P1 42.00° 96-6-12-18-24-30-36-42-48-54-60-66-72-78-84-90
Cut to a center point

P2 90.00° 96-6-12-18-24-30-36-42-48-54-60-66-72-78-84-90

CONCAVE

CC1 40.00° 3-9-15-21-27-33-39-45-51-57-63-69-75-81-87-93
Cut from tip of pavilion to girdle

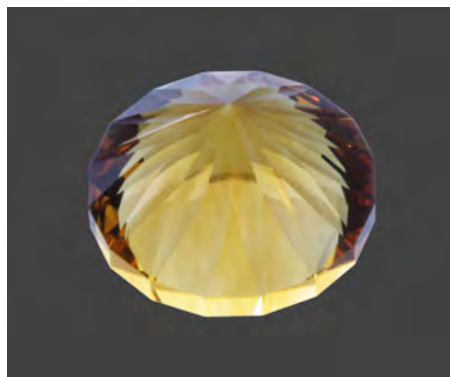
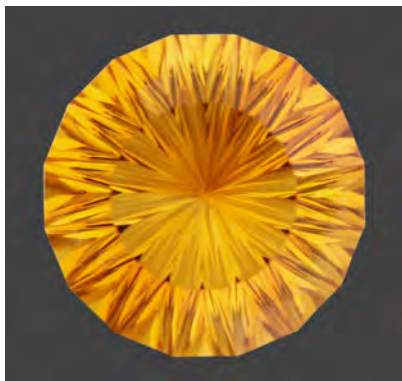
With 1,200 grit diamond paste on the 8mm mandrel, cut 16 concave facets on the numbers above. Because of the 40.00° angle, the cutting will begin at the tip of the pavilion and work towards the girdle. Stop the cutting at 0.75mm before the girdle, which will give you enough room to pre-polish with 2,000 diamond paste. Do the polishing with cerium oxide.

CROWN

C1 43.00° 96-6-12-18-24-30-36-42-48-54-60-66-72-78-84-90
C1 & C2 should be equal in size

C2 41.00° 96-6-12-18-24-30-36-42-48-54-60-66-72-78-84-90

TABLE 00.00° Cut to 1/2 width of stone



Authorized factory representative for Ultra Tec Faceting Machines, Equipment & Accessories