



BI-COLOR GREEN AMETHYST - Bamboo Cut

96 index gear • 10 mm x 16 mm • 11.2 carats

PAVILION

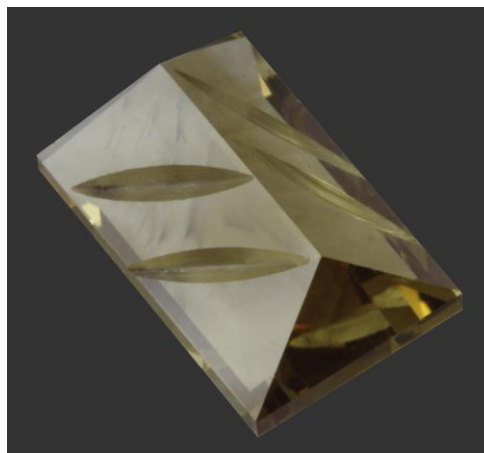
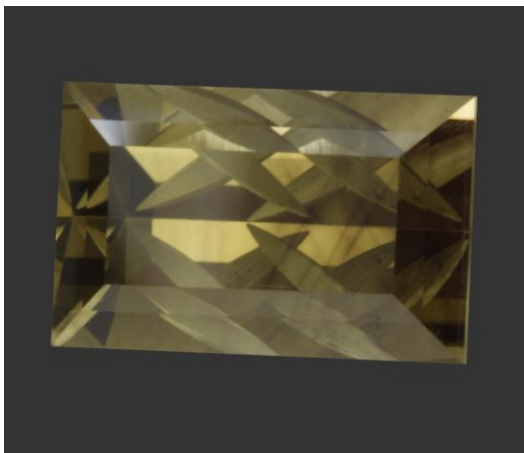
P1	43.00°	96-48		
P2(G)	90.00°	96-48	24-72	Cut to a rectangle approximately 2-1 ratio
P3	65.00°	24-72		Cut to girdle line

PAVILION - CONCAVE

Set motor plate at 45.00° (tool facing you). Install the slice tool. Set the mast at 43.00°. Using the 96 setting, set up the machine to put a slice in the upper right corner of the pavilion to the edge of the girdle. Repeat on tooth 48. Move the table 4 mm away from you and repeat on 48 & 96. Do not polish slice.

CROWN

C1	43.00°	96-48	72-24	Cut to girdle line
C2	37.00°	96-48	72-24	Cut to just under 1/2 way to table
TABLE	00.00°			Should be 1/2 width of stone



Authorized factory representative for Ultra Tec Faceting Machines, Equipment & Accessories